

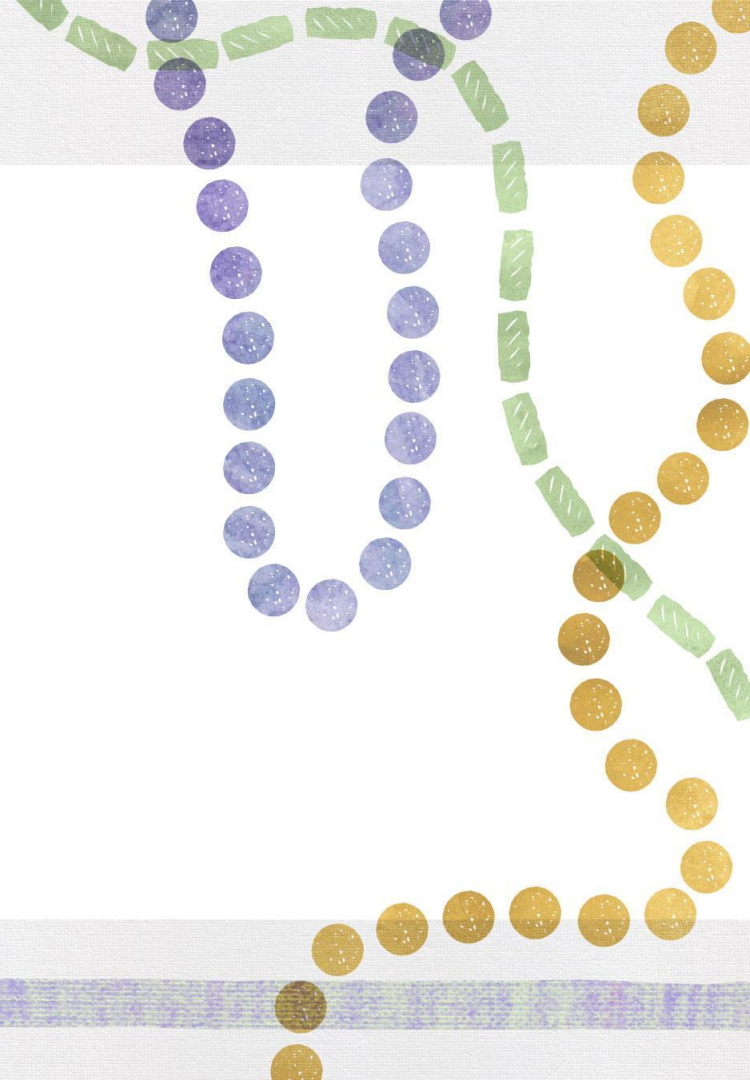


**2023-2024 Accountability
Updates
October 26, 2023**

Agenda Items

- I. Overview of Louisiana's Accountability System
- II. Highlighting What is "New"
- III. K-2 Accountability Plans
- IV. Urgent Intervention and Comprehensive Intervention Required

Overview of Louisiana Accountability System



What is Louisiana's Accountability System

Louisiana's School and District Accountability System is designed, per R.S. 17:10.1, to:

- Support student achievement;
- Provide assurance that the quality of education is monitored;
- Provide clear standards and expectations for schools and school systems;
- Assist schools and school systems so resources may be focused on student academic achievement.

What Data Are Used in the School Performance Score?

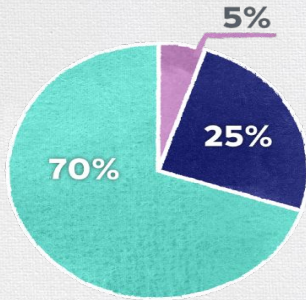
School Performance Score (SPS) measure how well schools perform on a variety of indices. Indices include:

- Assessment Index: LEAP 2025, LEAP Connect, ELPT (in 2024 ELPT Connect)
- Progress Index: LEAP 2025 ELA and math
- Dropout Credit Accumulation Index: Credits Earned in Grade 9
- Interests & Opportunities: Menu-based Indicators
- Cohort Graduation Index: Graduation Rate
- Strength of Diploma: Credential Attainment, HiSET
- ACT Index: Highest ACT score by Grade 12; WorkKeys may be substituted

How are Indices Weighted?

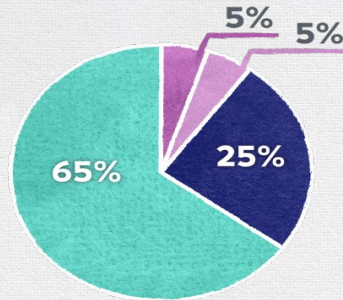
Indices are weighted based on a school's grade configuration and available data.

Elementary Schools



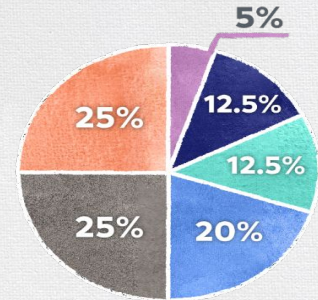
- Assessment Index (including Progress to English Language Proficiency)
- Growth Index
- Interests & Opportunities

Elementary/Middle Schools (with Grade 8)



- Assessment Index (including Progress to English Language Proficiency)
- Growth Index
- Interests & Opportunities
- Dropout Credit Accumulation Index

High Schools



- Assessment Index (including Progress to English Language Proficiency)
- Growth Index
- Interests & Opportunities
- ACT/WorkKeys
- Strength of Diploma
- Cohort Graduation Rate

What's New Highlights



What are the changes in 2023-2024?

- The letter grade scale shifts in 2023-2024.
- Interests and Opportunities Updates
 - The new 2023-2024 Menu was published in March 2023 with changes from 2022-2023.
 - The 2023-2024 Interests and Opportunities Guidance will be available in June.
- The K-3 literacy assessment will be administered in 2023-2024 for the first time. It will be administered three times per year in prescribed testing windows aligned to statutory requirements.

What are the Changes in 2023-2024?

- Field Testing Social Studies
 - In 2023-2024, social studies assessment in grades 3-8 will be a field test so the assessment index composition will change for one year.
 - In 2023-2024, the state will pilot a new LEAP 2025 high school assessment for Civics. All students enrolled in Civics are expected to participate in the field test. The following year Civics will be included in SPS.
- Jump Start students who enter high school in 2023-2024 and thereafter and are required to take Geometry to meet graduation requirements.
- ELPT Connect scores will be available in TIDE later in the Fall. Standard setting will take place and submitted to BESE for approval prior to releasing results.

Letter Grade Scale



How Will the Letter Grade Ranges Change in 2023-2024?

The fall 2023 release will continue the letter grade scale also used in 2021-2022 and 2022-2023.

In the fall of 2024, the letter grade scale will shift up toward the full implementation of the original 150 point scale.

Letter Grade	2022-2023	2023-2024	2024-2025 & Beyond
A	90.0-150.0	95.0-150.0	100.0-150.0
B	75.0-89.9	80.0-94.9	85.0-99.9
C	60.0-74.9	65.0-79.9	70-84.9
D	50.0-59.9	50.0-64.9	50.0-69.9
F	0.0-49.9	0.0-49.9	0.0-49.9

New Social Studies Assessments



Social Studies Field Test in 2023-2024

Field tests are important to the development of future items that are well-aligned to student standards and that yield valid and reliable results. Per BESE policy, all schools must participate in field tests when they are selected.

- Field tests cannot generate reliable results for students and therefore student/school results will not be available.
- In 2023-2024, all schools with students in grades 3-8 will be expected to participate unless they participate in LEAP Connect.

ELA, Math, and Science will be weighted equally for grades 3-8 assessment index in 2023-2024.

Civics Field Test in 2023-2024

In 2023-2024, the state will pilot a new LEAP 2025 high school assessment for Civics. All students who are enrolled in a Civics class will be expected to participate.

- As with all field tests, no student results will be reported. The purpose of field tests is to gain information about items that will be included on the test.
- The Civics operational assessment will replace the U.S. History requirement for graduation for all students who enter a regular high school grade in 2024-2025. Scores from initial tests of U.S. History will continue to be included in the SPS for all students.

Interests and Opportunities



Review of 2022-2023

The I & O index for a school is based on the sum of points earned from each of four indicators worth 37.5 points for a maximum of 150 points.

- The school I & O index will be used for all subgroup performance scores.
- The district I & O index will be the weighted average of all school indices (weighted by total enrollment of all grades on October 1)

Changes to the Menu Options

Schools still select 4 indicators.

- Total of 4 ***different*** indicators
- Represent 2 domains
- Minimum of 3 are data-based
- Represent all of the grade levels you serve

There have been updates to indicators.

- TA1, *school offers arts courses taught by arts teachers certified in their area of instruction*, has been removed from the menu.
- Additional menu options related to high quality science curriculum and providing STEM courses and opportunities have been added to the menu.

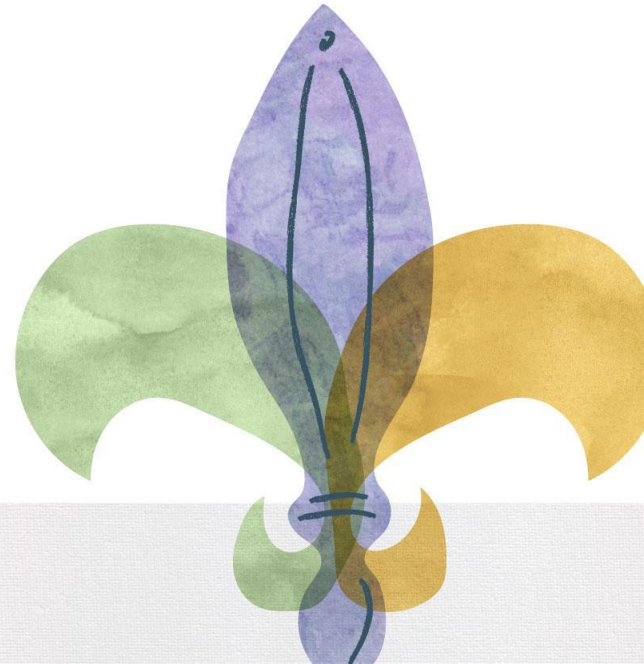
Geometry Graduation Requirement



New Geometry Requirements

- Jump Start students who enter high school in 2023-2024 and thereafter and are required to take Geometry to meet graduation requirements.
- All students who are enrolled in a course that meets the Geometry course requirement must participate in the Geometry test.
 - For example, a student who is enrolled in Applied Geometry will take the LEAP 2025 Geometry test.
 - There will only be one test for Geometry.
 - The initial scores for these students will be included in the assessment index.

K-3 Assessment Updates



K-3 Screener Administrations

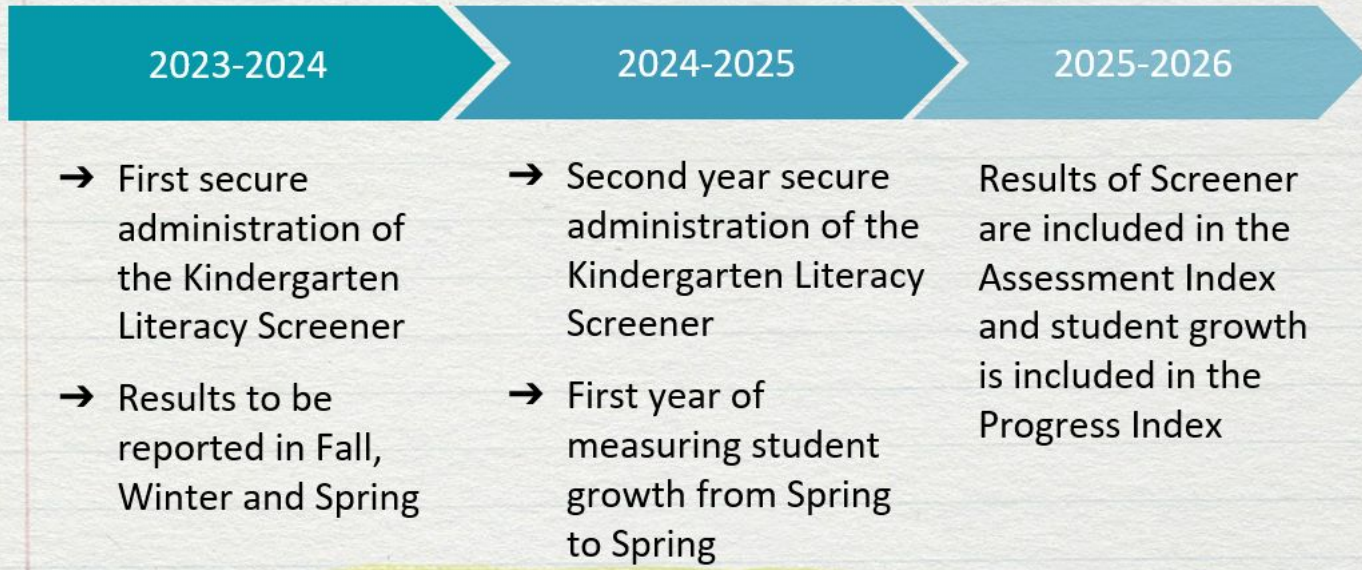
The department continues to work through contract negotiations with Amplify, the new vendor selected for the K-3 Literacy Screener. The screener is administered three times per year as required by state law (First 30 days of school, December, April.)

Window 1: All school systems administered either the DIBELS 8th Free version of the screener or the mCLASS screener if there was an existing district contract with Amplify. The screeners are exactly the same. The data were reported to EdLink in October.

Window 2: Systems will access the mCLASS screener through a state platform that will have student records uploaded directly from EdLink, and results will be reported directly from the vendor. There will be some field testing to develop the secure form of the screener.

Window 3: Systems will administer the first secure Louisiana form of the screener. The results will not be used in accountability, but will be used to develop the final model for 2025-2026.

K-2 Accountability Timeline



Accountability in K-2 Schools

In 2025-2026, it will be possible for K-2 schools to have their own SPS. Schools without grades higher than grade 2 will continue to be paired with their feeder school that has LEAP scores from grades 3 or higher. The following indices will receive independent K-2 results.

- **ELPT Progress Points in the Assessment Index:** Students who are in grades 1 and 2 will be included only in the SPS of the K-2 school. They will not share ELPT results. (Kindergarten students who are testing for the first time are not included in the SPS until they have a score from the second year.)
- **Interests and Opportunities:** I & O points will be calculated independently and will not be shared.
- **K-3 Literacy:** In 2023-2024, there will be no results from K-3 literacy screening. Screening results will be included in the Assessment Index beginning in 2025-2026.

Comprehensive and Urgent Intervention



Comprehensive Intervention Required (CIR)

Prior to 2021-2022, schools were assigned to ***Comprehensive Intervention Required*** (CIR) based on letter grades or graduation rate.

- The school earns a “D” or “F” letter grade in the state accountability system for three consecutive years
- The school has a graduation rate of less than 67 percent in the most recent year

For a turnaround school that has earned one or more T letter grades, the department determined a letter grade (A through F) for the purpose of determining whether the school has earned the comprehensive intervention required label.

A new school earned a comprehensive intervention required label if it earns a “D” or “F” letter grade in both the first and second year of operation.

Comprehensive and Urgent Intervention

Beginning in 2021-2022, schools were also assigned to **Comprehensive Intervention Required (CIR)** based on multiple years of identification for **Urgent Intervention Required (UIR)**.

- Schools that have been D- or F-rated for three consecutive years or two years for new schools, and/or
- Schools that have a graduation rate less than 67 percent, and/or
- Schools identified as UIR for the same student group or for discipline for three consecutive years

Urgent Intervention Required

Urgent Intervention Required for Academics:

- Schools earned a score for one or more student groups that is equivalent to an “F” for at least two years

Urgent Intervention Required for Discipline:

- The out-of-school suspension rate is more than two times the national average for the past three years (Two times the national average equals 5.2 percent for grades PK-4 and 20.2 percent for grades 5-12)

Urgent Intervention Needed:

- Schools earned a score for one or more student groups that is equivalent to a “D” or “F”

Subgroup Intervention Summary

The department provides a school intervention summary, posted to the secure ftp, that includes details and timelines for all CIR and UIR determinations. Schools can see results of subgroup scores and years in CIR and/or UIR.

Accountability Resources

[SPS Calculators](#): estimate school performance scores

[School, Center, and System Performance-scores](#): files include points from each index

School Intervention Summary: includes details for CIR and UIR available by school system in ftp

[2021-2022 SPS Frequently Asked Questions](#) available in data center with SPS scores and will be updated in 2023.